

Mobilize Your Business Efficiently and Confidently with the Industry Standard Emulation Client

If your business today relies on mission-critical applications resident on mainframe systems, your challenge becomes how to easily and reliably extend these applications to your mobile workers to gain the advantage of automation, productivity, reliability, security and efficiency. Overcome these challenges with Wavelink, proven software for extending and managing your most important business applications.

Wavelink Emulation software provides the most comprehensive solution for accessing, managing and maintaining connections to applications resident on host systems using 5250, 3270, VT and HP emulation. Wavelink Emulators enhance the productivity of your mobile workforce and IT staff, and the applications and devices they use. With Wavelink, you can spend less time supporting and more time improving your business.



Boost the Productivity of Your Mobile Workers

Wavelink Emulators help your system and people work smarter by providing for intelligent data collection and communications functions. For example, Wavelink Emulators help you prevent errors and inefficiencies caused by incorrect data entry or scans, take advantage of easy on-screen navigation, and maximize the uptime of your workforce by avoiding dropped connections. Wavelink Emulators also allow your IT staff to get detailed control over various functions from scanning, to users' access to applications, and interactions with the host, such as directed messages and error notices.

Minimize Support & Administration Costs (TCO) with Integrated Management

Relieve the burden of supporting your software and mobile devices. Wavelink Emulators come tightly integrated with the ability to be remotely configured, secured, managed and updated – all from a central management console. Using Wavelink Avalanche with your Emulators, you can seamlessly revise device configurations, synchronize software and update firmware and drivers. To monitor and manage your install

base of mobile devices and applications, Wavelink Avalanche also provides real-time visibility into their status. It also helps you keep track of all managed assets and even lets you export asset data to reporting applications.

Gain Flexibility to Support Mixed Hardware and Emulation Environments

Wavelink Emulators provide you with flexibility and investment protection by supporting the broadest range of mobile devices and emulation types available. With Wavelink Emulators, you can preserve your existing infrastructure, while migrating to newer devices and technologies. For example, you can run emulation based applications consistently across your DOS/legacy units and Windows-based devices, providing for a seamless user experience as well as the lowest cost of support and training. Wavelink Emulators give you flexibility to utilize the most popular emulation types including 5250, 3270, VT100, VT110, VT220, VT320 and HP. They also allow you to take advantage of running multiple emulation sessions concurrently (i.e. 5250 and VT), from the same device.

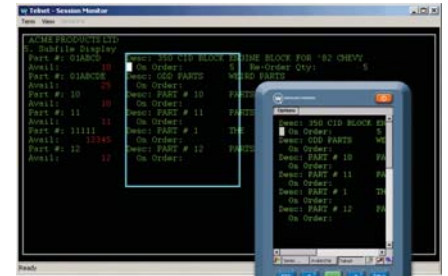


Wavelink Emulators provide users with a smart interface, increased productivity, and centralized control for accessing and managing applications within a 5250, 3270, VT or HP emulation environment..

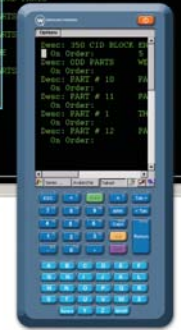
1. Centrally configure, deploy and update your emulation software across all your devices, with detailed control over emulation parameters, such as Symbology type.
2. Wavelink Session Monitoring allows help desk personnel to take over and troubleshoot problem sessions and get workers back to being productive.



1.



2.



Key Features

Plug and Play - Efficiently connect to your host systems without having to make changes to existing applications. Setting up emulation parameters, keyboard mapping and host connection profiles can be done directly through a device-side administrator or remotely using an integrated central management console.

Multiple Emulation Types - Wavelink Emulators provide rich support for all of the popular emulation types including 5250, 3270, VT100, VT110, VT220, VT320 and HP.

Advanced Troubleshooting - Wavelink Emulators provide the ability for a help desk or support representative to "remote control" a user's Telnet session and even lock the end user out of the session if desired. This allows for hands-on support of production problems and ultimately gets workers back to being productive rapidly. Wavelink also provides session logs from each device to provide performance insight into areas such as scanning levels, battery issues, time logged on system and more.

Multiple Concurrent Sessions - Take advantage of running multiple emulation sessions at the same time (i.e. 5250 and VT) and easily navigate between them, all from the same device.

Auto-populate Emulation Fields via Scripting - For the IMB 5250 emulation, this feature allows the user to use scripting to configure Field Data Identifiers. Field Data Identifiers assign a unique ID to each field on the screen. Anytime a barcode beginning with that particular ID is scanned, the information is automatically populated in the corresponding field.

Wavelink Industrial Browser Session Monitor Utility - Allows a user to view the Telnet Client on a mobile device from the Avalanche Management Console. Session Monitor includes the ability to enable, configure and launch the Session Monitor. Session Monitor also includes a logging feature that allows the user to create a trace for Telnet sessions.

Easy to Use Navigation - Make your mobile workers work more productively with smart user interface features such as Windows-based touch screen hotspots, tiling of displays, display locking, key mapping, keyboard macros, and more.

Connection Persistence - Increase productivity by avoiding dropped connections between devices and the host system, using the Wavelink TermProxy as part of your Emulation solution. Devices can freely roam in and out of RF coverage while maintaining application state and seamlessly reconnect to the host. Sessions will also survive a device reboot or battery change allowing users to continue working without interruption. The TermProxy server also provides complete failover capability eliminating the potential for single point of failures.

Support for Legacy and New Devices - Preserve your existing infrastructure, while having the flexibility to migrate to newer devices and technologies. For example, DOS/legacy units can co-exist with Windows-based devices for a seamless user experience.

Wireless Updates of Emulation Client and Settings - Update emulation parameters and load/update the emulation client remotely from a central console over the wireless connection. Drastically reduce support costs by updating settings and client versions from a central enterprise level console.

Advanced Scripting - Create and execute scripts within host application sessions. The Emulator Script Editor (launched from the Wavelink Avalanche Console) allows for scripts to be easily created via the user-interface, captured from an active Wavelink Emulation session, or imported from the Wavelink Avalanche console. These scripts can be initiated through a number of triggers including selection from a menu, session connection, defined key combination, screen update, or scan (barcode, RFID, MSR).

Advanced Scanning Integration - Take advantage of tight integration with key scanning functions to maximize data collection productivity. Automatically strip, append, or replace scan data based on length, size, data type; prevent scanning errors using data field identifiers and "scan only" field support; perform automatic scanning using host initiated commands; and more.

Battery Level and Signal Strength Indicators - Give end users immediate feedback with configurable on-screen battery level and radio signal strength indicators. These indicators can be independently displayed in the system tray at the bottom of the screen or on the screen via x,y coordinates. The indicators can also be configured to only display when the levels become critical.

Devices Supported - Wavelink's Emulation software supports a wide range of manufacturers and device models including Motorola, Symbol, Intermec, PSC and Fujitsu devices with new support planned. For a complete list of currently supported devices, please visit <http://www.wavelink.com/wavelink/emulators>



Sales and Support

United States: 1.888.697.WAVE (9283) UK: 0870.351.8564

International: +1.206.274.4280

EMEA: +44.870.351.8564

www.wavelink.com